



NEURON CONSULT ZT
Pelikanstr.18, 4061 LINZ-PASCHING, Austria

KOWLOON SOUTHERN LINK, HONG KONG

KDB400 TUNNELS : YAU MA TEI VENT TO NAM CHEONG OVERRUN

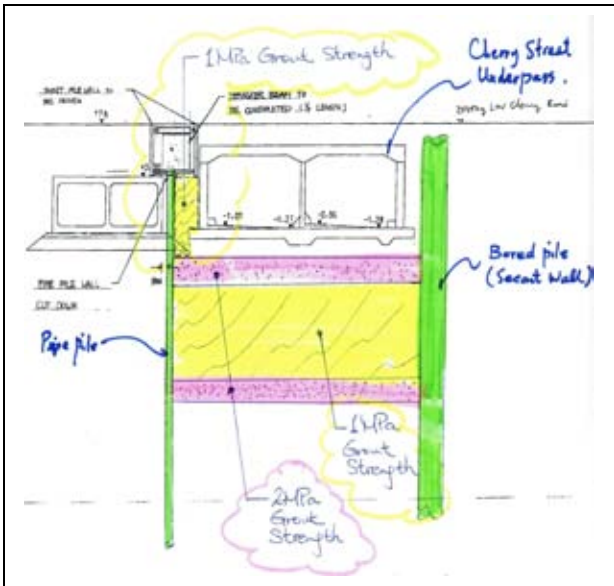


OWNER: KOWLOON – CANTON RAILWAY CORPORATION, HONG KONG



LOCATION

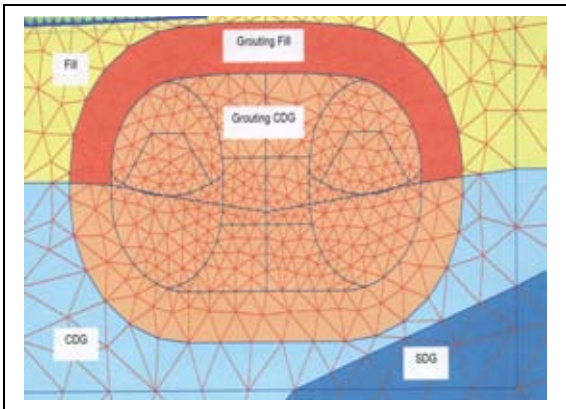
SITE LOCATION



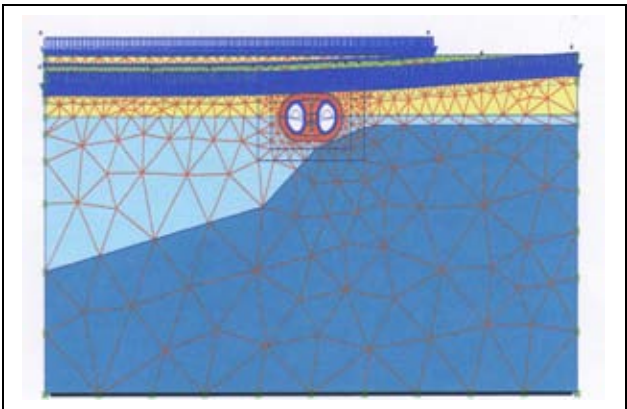
LONGITUDINAL SECTION

PROJECT DESCRIPTION
A 3.8 km new underground railway, thereafter called "Kowloon Southern Link" or KSL, would be constructed to connect the KCRC East Tsim Sha Tsui (TST) Station to the West Rail (WR) Nam Cheong (NAC) Station with its alignment under Salisbury Road, Canton Road and the West Kowloon Reclamation Area to improve the accessibility to and lessen the traffic congestions at TST and West Kowloon districts. The civil construction works for the KSL are split into three design and build contracts KDB200, KDB300 and KDB400.

SERVICES PROVIDED
FINAL DESIGN OF MINED UNDERGROUND STRUCTURE UNDERCROSSING CHERRY STREET USING FREEZING OR GROUTING OPTION WITH SCL PRIMARY SUPPORT AND EXCAVATION.
PERIOD OF WORK: 2004 - 2006



FEM MODEL OF GROUTING/FREEZING CROSS SECTION



GENERAL FEM MODEL